

# EWA-C SERIES

Inline Conveyorized Automatic  
Rotary Tower Stretch Wrapper

# ARPAC®

A DURAVANT COMPANY

## EWA-C SERIES

Inline Conveyorized Automatic  
Rotary Tower  
Stretch Wrapper



### FEATURES AND BENEFITS

#### Machine Features

- Flashing safety beacon
- Adjustable top and bottom illuminated LED wrap counters
- Magnetic proximity switches in place of mechanical limit switches
- Top film overwrap control feature (TOC)
- Electronic film tension adjustment control on control panel
- Long-range photo eye for automatic load height sensing
- User-friendly Allen-Bradley® HMI operator control panel
- Built-in self-diagnostics
- Positive home position alignment
- CDLR conveyor or drag chain conveyor
- Electric cut, clamp, and wipe

#### System Components

- Heavy-duty, welded steel construction (no plastic panels) designed for long life
- Eco-friendly, durable powder coating
- Variable wrap arm speed using 3/4 HP, 90Vdc motor with ANSI 60 chain drive system
- Up to 15 RPM rotating arm can deliver 25–55 loads per hour
- Dual V-belt drive rotating arm
- NEMA 3 commutator

#### Conveyors

- Chain driven roller conveyor can support up to 4,000 lb.
- Three strand drag chain conveyor can support up to 3,000 lb.
- Integrated film clamp
- Automatic indexing

#### Controls Hardware

- Allen-Bradley® power, control, and safety components
- Allen-Bradley® MicroLogix™ PLC
- NEMA 12 electrical cabinet
- UL/CSA approved components

#### Film Delivery System

- EZ-Load® film pre-stretch dispenser for 20" film rolls
- Dual anti-static film rollers with manufacturer's lifetime warranty
- Film pre-stretch capability from 150 to 300% stretch (200% standard)
- Variable carriage speed up to 21 feet per minute
- Dancer bar variable corner compensation
- Electronic film tension adjustment control

### Legacy Packaging

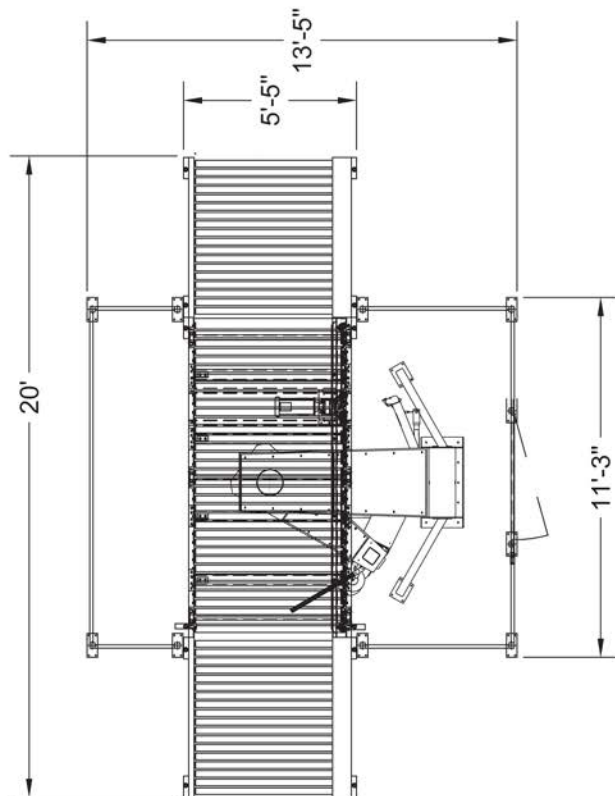
333 City Blvd W 17th Floor, Orange, CA 92868

(877) 235-5993

support@legacypkg.com

www.legacypkg.com

Note: Final Layout May Vary



Specification	Measurement
Max. load weight capacity	4,000 lb. (standard)
Arm rotation speed	Up to 15 RPM
Min load height	24"
Max load height (standard tower)	80"
Max. load diagonal clearance	75"
Max. load width & length	53" x 53"
Machine height (standard tower)	123"
Machine length	20'
Machine width (wrapper only)	167"
Electrical power requirements	230 V, 3 Ph, 60 Hz, 20 A, 2.4 kW

#### Options

- Tower and arm extensions for wrapping loads exceeding standards
- 30" film delivery system
- Other NEMA rated control enclosures available
- Optional input voltages
- Cold and freezer packages available
- Free-standing control panel



Heavy-Duty Slewing Bearing and NEMA 3R Commutator



Electric Clamp, Cut, and Wipe Down System



Optional Top Sheet Dispenser

### Legacy Packaging

333 City Blvd W 17th Floor, Orange, CA 92868

(877) 235-5993

support@legacypkg.com

www.legacypkg.com