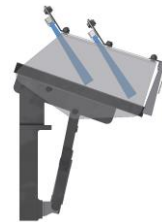
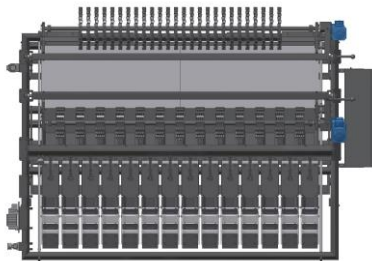




# Weightronic SF-Series

Linear high speed multi-head weigher  
for  
delicate products such like apples, tomatoes and others



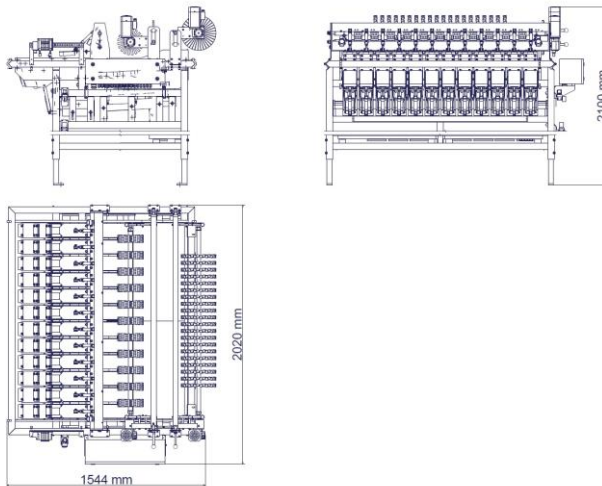
## Weightronic SF-Series

- Robustly constructed in stainless steel and clean design
- 12 or 14 Weigh Heads
- Siemens PC ET200SpOpenController with 12“ color touch Panel
- Special Design or gentle handling of delicate products by a unique brush and sot belt system
- Gentle rotating brushes prevent briging across infeed channels
- Fully automatic infeed control
- Automatic taring
- Capable of running with one or more channels disabled
- Count by weight, minimum weight or average weight programmes
- Counting function with photocells
- Easy to combine with one or more packaging machines
- Removable distribution plates and channels
- Simply cleaned
- Weighing Bucket Size 110x280mm

## Weightronic SF-Series



## Weightronic 1200 SF



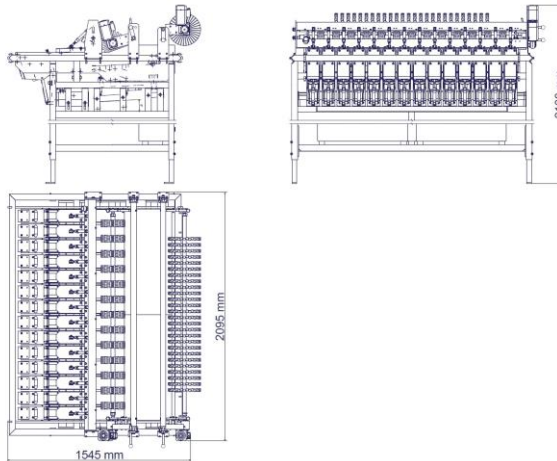
### Standard Equipment:

- Stainless Steel and Clean Design
- Distribution Plates and Channels easy to remove
- Weighing Bucket Size 110x280mm
- Stainless Steel IP 68 load cells
- Siemens PC with 12" Color Touch Panel
- Counting Option with Photocells
- Rotating Brush

### Technical Data:

- Up to 35 drops at 1 kg; dep. on product
- 230/400 V/N/PE; 50/60Hz; approx. 1.4 KW
- Weight: approx. 700kg
- Package Size: 1 to 3 kg, dep. on product

## Weightronic 1400 SF



### Standard Equipment:

- Stainless Steel and Clean Design
- Distribution Plates and Channels easy to remove
- Weighing Bucket Size 110x280mm
- Stainless Steel IP 68 load cells
- Siemens PC with 12" Color Touch Panel
- Counting Option with Photocells
- Rotating Brush

### Technical Data:

- Up to 40 drops at 1 kg; dep. on product
- 230/400 V/N/PE; 50/60Hz; approx. 1.6 KW
- Weight: approx. 750kg
- Package Size: 1 to 3 kg, dep. on product

## Main Discharge Systems SF-Series



- **Cross-Conveyor bi-directional**

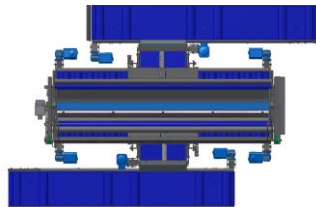


- **2 conveyors to the middle and 1 to the front**
- **1 portion conveyor to the side**



### **High-Speed Servo Rotating Star**

- **1 conveyors to the left**
- **1 conveyors to the right**



### **High-Speed Servo Rotating Star**

- **2 conveyors to the middle and 1 to the front**
- **1 portion conveyor to the side**
- **2 conveyors to the middle and 1 to the rear**
- **1 portion conveyor to the side**

## Weightronic SF-Series



WEIGHTRONIC 1200SF

### YOUR BEST PARTNER IN PACKAGING

The newly developed Weightronic 1200 SF weigher presents a versatile alternative to rival vibratory systems - which tend to be dedicated to a particular product - and can switch easily between fruit and veg items such as small potatoes, apples or citrus fruits. This flexibility is due to features such as quick-change vibratory channels and distribution plates that allow for tool-less changeovers between different types and sizes of products.

For delicate products, special "Soft Fill" design features such as minimized drops, adapted weighing buckets and vibratory channels ensure gentle handling.



www.ilapak.com



WEIGHTRONIC 1200SF

#### TECHNICAL SPECIFICATIONS

Version	"CleanDesign" in Stainless Steel
Specials	Removable Dosing Plates and Channels
Machine Control	Siemens PC Controlled with colour touch panel
Electrical Supply	230 V / 400 V / 480 V, 3 phases, 1%, Grid 50Hz / 60Hz
Operating Pressure	80 psi
Air Consumption	approx. 12 cfm/min

\* optional

#### MAIN FEATURES

The weighing machine Weightronic 1200 SF is equipped with 12 soft fill weighing buckets in a linear configuration for a narrow footprint without reducing capacities. The machine is also available with 14 weigh buckets.

Designed for package weights from 500 grams to 5kg this stainless steel weigher is designed for potatoes, onions, citrus and other similar fruits and vegetables.

The dosing plates and vibratory trays are easy to remove without tools for cleaning offering unobstructed access to conveyors and components for service.

A high end Siemens 57 PC control with large 10" color touch screen is standard for easy program storage, language options and operator help screens for troubleshooting.

Along with stainless steel, food grade plastics and bakelite are used.

#### FEATURES

Stainless Steel and Clean Design	➤ Designed for easy cleaning and a simple maintenance aimed to minimize downtime
Vibratory Trays and Dosing Plates removable without tools	➤ Easy to remove for cleaning and maintenance. Quick change-over for other products
Linear Configuration of Weigh Buckets	➤ The linear setup allows a maximum of weigh buckets at a minimum space
Siemens PC with 10" Color Touch Panel in a separate Ritter Control Cabinet	➤ Controls are separated from the machine and vibration. Large Touch Panel for easy operator use

#### BENEFITS



All measurements and specifications unless otherwise specified.  
Please discuss your needs with our local representative to verify these machines to your product's specific requirements. These specifications are not binding. We reserve the right to change them without prior notice.

Discover more about us, visit:

www.ilapak.com